

Appendix 5b: 2022-23 Housing Revenue Account Budget Consultation

<https://consultation.nwleics.gov.uk/finance/e5cc028f>

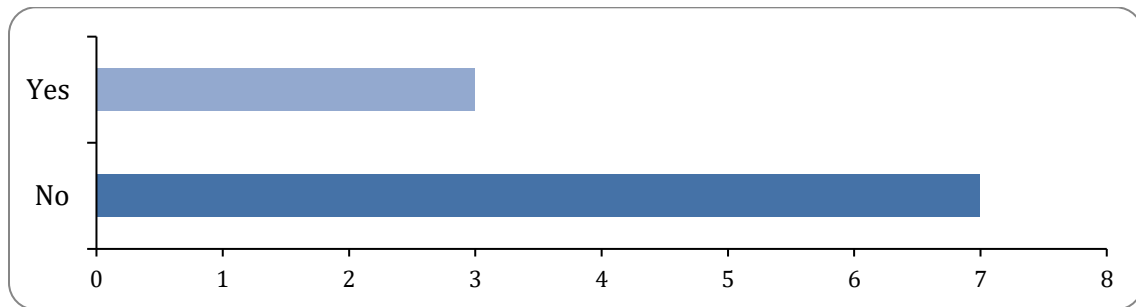
This report was created on Monday 24 January 2022 at 12:29

The activity had not yet closed when this report was generated. As such, this report may not accurately reflect the final distribution of responses, and should be treated as interim only.

Responses to this survey: **10**

1: Do you live in a property owned by NWLDC?

There were 10 responses to this part of the question.

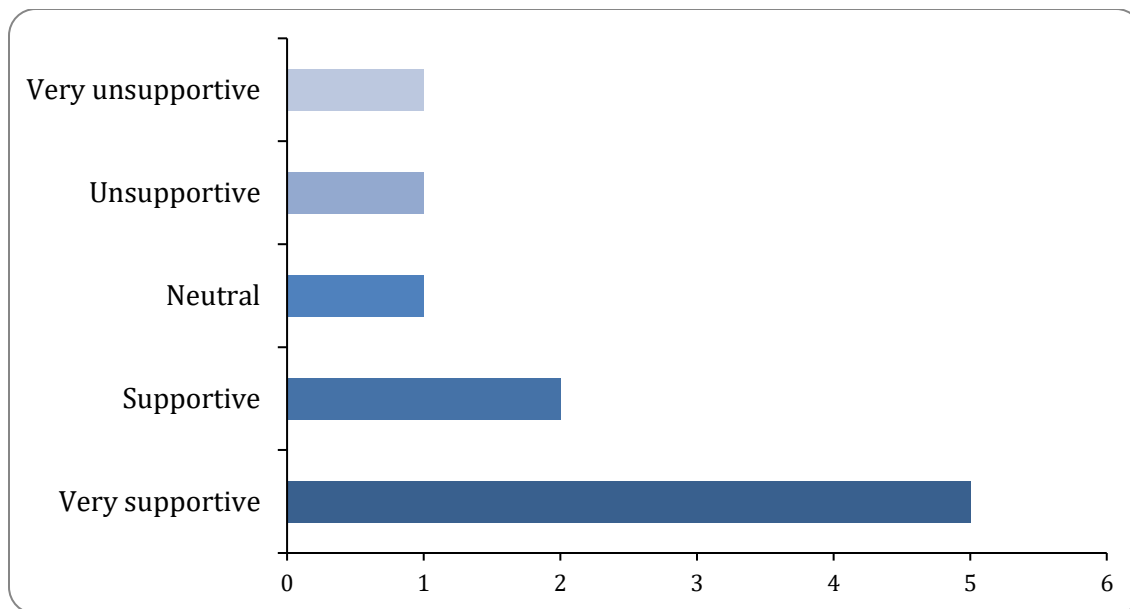


Option	Total	Percent
Yes	3	30.00%
No	7	70.00%
Don't know	0	0.00%
Not Answered	0	0.00%

2: We are planning to increase the rents we charge by up to 4.1%.

There were 10 responses to this part of the question.

North West Leicestershire



Option	Total	Percent
Very unsupportive	1	10.00%
Unsupportive	1	10.00%
Neutral	1	10.00%
Supportive	2	20.00%
Very supportive	5	50.00%
Not Answered	0	0.00%

What comments would you like to make about the proposed rent increases?

There were 6 responses to this part of the question.

Of the comments:

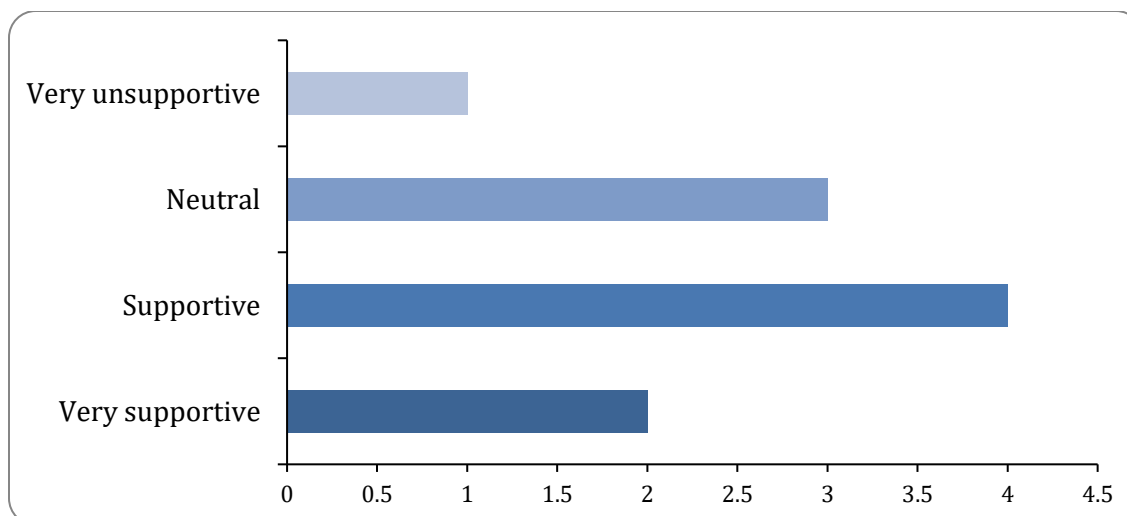
- 3 felt it would help the Council maintain the properties
- 1 raised affordability concerns

3: Some tenants pay for particular services we provide that are only relevant to them, known as service charges.

How supportive are you of these changes?

There were 10 responses to this part of the question.

North West Leicestershire



Option	Total	Percent
Very unsupportive	1	10.00%
Unsupportive	0	0.00%
Neutral	3	30.00%
Supportive	4	40.00%
Very supportive	2	20.00%
Not Answered	0	0.00%

What comments would you like to make about the proposed changes to service charges? (If you would like to comment on a particular charge, please clearly note which charge you are referring to).

There were 6 responses to this part of the question.

Of the comments:

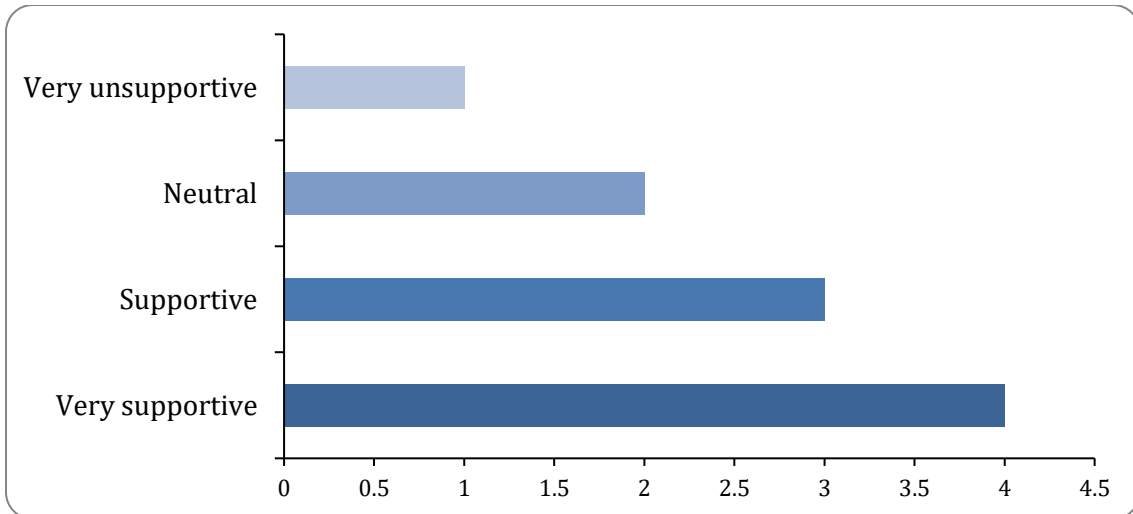
- 2 were concerned about the increase in the older persons service charge
- 1 raised concerns over the size of the administration charge
- 1 thought the increase in utilities fees were likely to be an understatement

4: We also charge for a number of optional services we provide, which are listed in the table below.

How supportive are you of this increase?

There were 10 responses to this part of the question.

North West Leicestershire



Option	Total	Percent
Very unsupportive	1	10.00%
Unsupportive	0	0.00%
Neutral	2	20.00%
Supportive	3	30.00%
Very supportive	4	40.00%
Not Answered	0	0.00%

What comments would you like to make about the proposed changes to our optional charges?

There were 4 responses to this part of the question.

Of the comments:

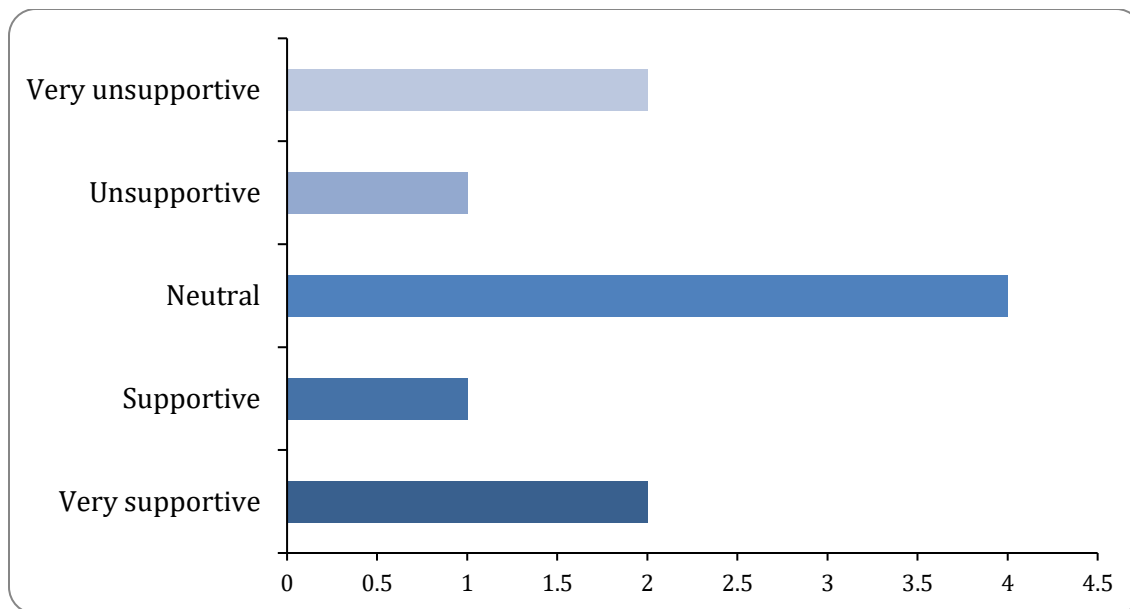
- 1 respondent felt all fees should rise by inflation
- 1 thought garage rental charges should be higher if tenants have access to off street parking

5: Overall, we expect to spend £14.9 million in 2022-23 on our day to day activities.

How supportive are you of these service developments?

There were 10 responses to this part of the question.

North West Leicestershire



Option	Total	Percent
Very unsupportive	2	20.00%
Unsupportive	1	10.00%
Neutral	4	40.00%
Supportive	1	10.00%
Very supportive	2	20.00%
Not Answered	0	0.00%

What comments would you like to make about on these service developments? (If you would like to comment on a particular service development, please clearly note which element you are referring to).

There were 7 responses to this part of the question.

Of the comments:

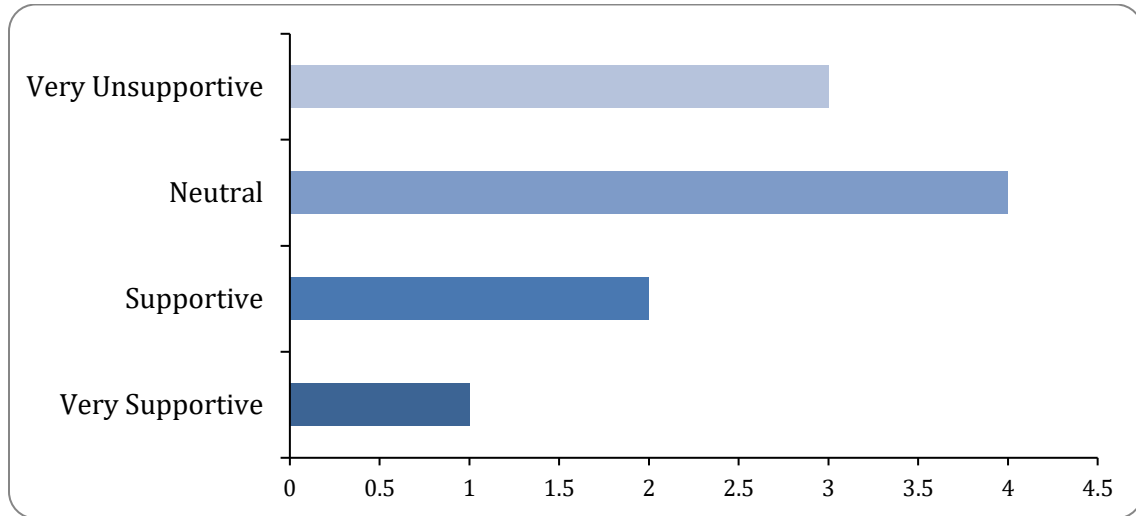
- 2 raised concerns about the cost of additional staff
- 1 raised concerns about the quality of repairs

6: In 2022-23 we plan to spend £15.0 million on large projects, such as new houses or major upgrades to our existing houses.

How supportive are you of our plans to reduce carbon emissions from our properties?

North West Leicestershire

There were 10 responses to this part of the question.



Option	Total	Percent
Very Unsupportive	3	30.00%
Unsupportive	0	0.00%
Neutral	4	40.00%
Supportive	2	20.00%
Very Supportive	1	10.00%
Not Answered	0	0.00%

What comments would you like to make about our plans to reduce carbon emissions from our properties?

There were 5 responses to this part of the question.

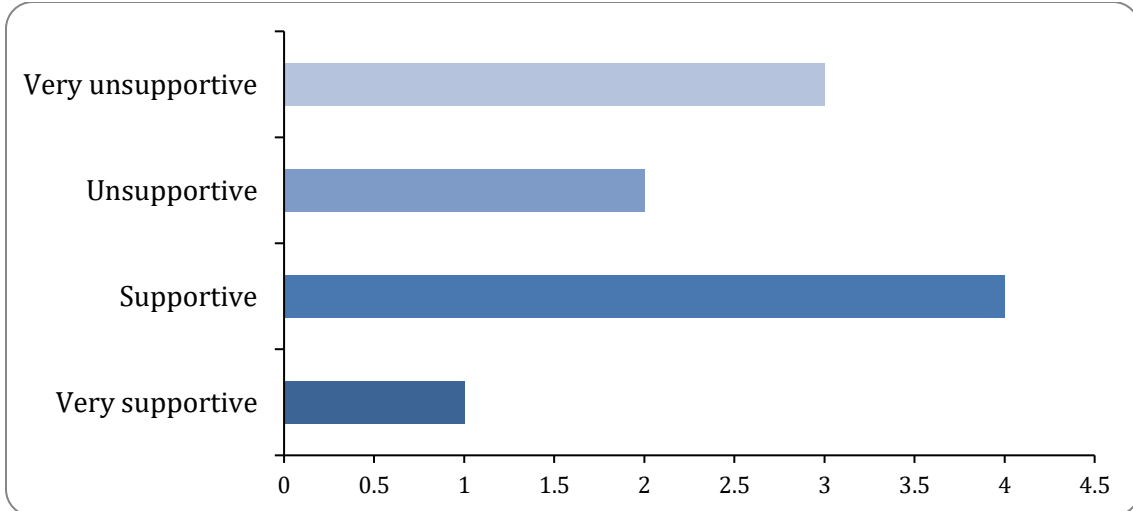
Of the comments:

- 1 did not consider it a priority at a time of rising living costs
- 1 suggested that the improvements need to benefit tenants
- 1 suggested the money should be used to fund work on the wider housing stock, not focused on the HRA.

How supportive are you of our plans to buy and build new council homes?

There were 10 responses to this part of the question.

North West Leicestershire



Option	Total	Percent
Very unsupportive	3	30.00%
Unsupportive	2	20.00%
Neutral	0	0.00%
Supportive	4	40.00%
Very supportive	1	10.00%
Not Answered	0	0.00%

What comments would you like to make about our plans to buy and build new council homes?

There were 7 responses to this part of the question.

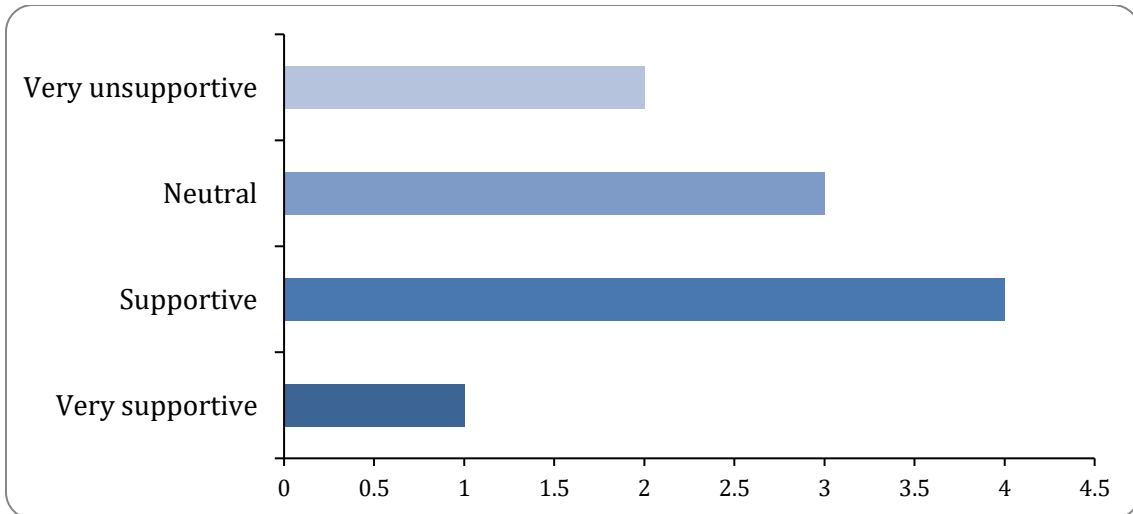
Respondents raised the following comments:

- 1 raised concern about local infrastructure
- 1 suggested exploring the regeneration of existing council estates
- 1 thought sites in Coalville should be regenerated with council houses
- 1 thought the money would be better used supporting the local economy.

How supportive are you of our plans to improve our existing homes?

There were 10 responses to this part of the question.

North West Leicestershire



Option	Total	Percent
Very unsupportive	2	20.00%
Unsupportive	0	0.00%
Neutral	3	30.00%
Supportive	4	40.00%
Very supportive	1	10.00%
Not Answered	0	0.00%

What comments would you like to make about our plans to improve our existing homes?

There were 6 responses to this part of the question.

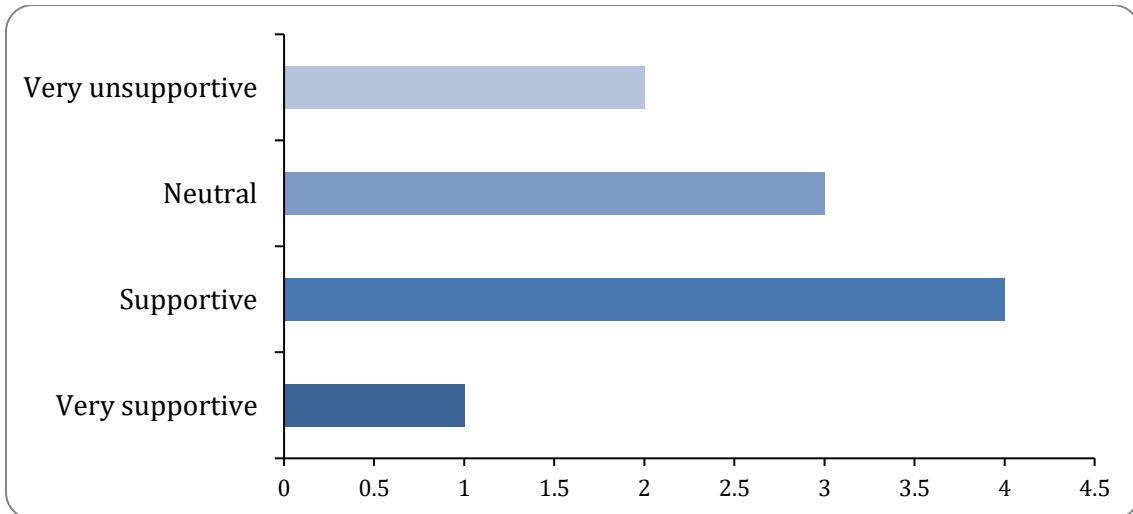
Of the comments:

- 3 comments gave approval for these costs.
- 1 comment suggested tenants should pay for the improvements.

How supportive are you of our plans to improve our supported housing schemes?

There were 10 responses to this part of the question.

North West Leicestershire



Option	Total	Percent
Very unsupportive	2	20.00%
Unsupportive	0	0.00%
Neutral	3	30.00%
Supportive	4	40.00%
Very supportive	1	10.00%
Not Answered	0	0.00%

What comments would you like to make about our plans to improve our supported housing schemes?

There were 5 responses to this part of the question.

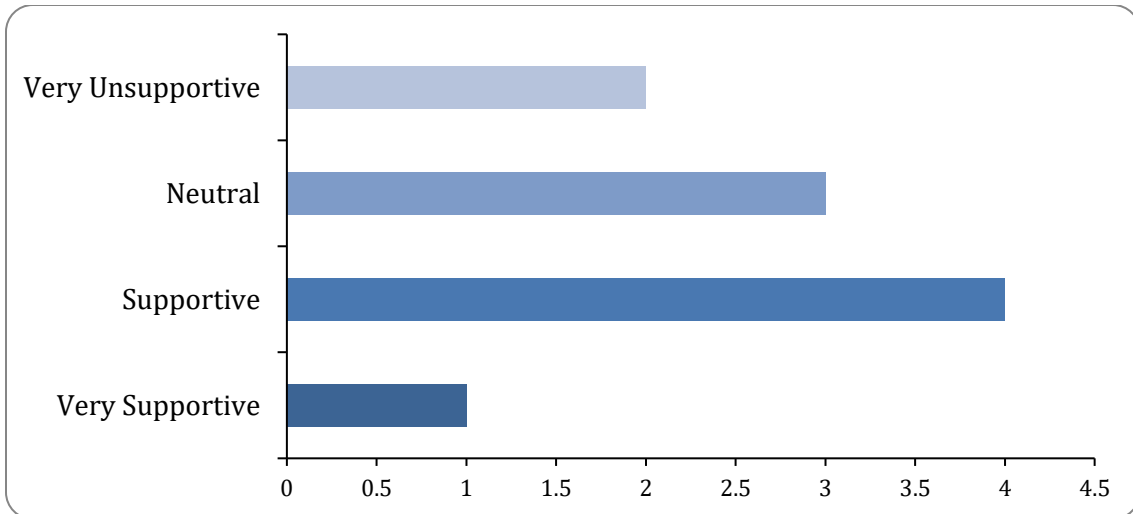
Of the comments:

- 2 comments were positive about the improvements.
- 3 were neutral.

What comments would you like to make about our general spending plans?

There were 10 responses to this part of the question.

North West Leicestershire



Option	Total	Percent
Very Unsupportive	2	20.00%
Unsupportive	0	0.00%
Neutral	3	30.00%
Supportive	4	40.00%
Very Supportive	1	10.00%
Not Answered	0	0.00%

What comments would you like to make about our spending plans? (If you would like to comment on a particular element of our spending, please clearly note which element you are referring to).

There were 5 responses to this part of the question.

Of the responses:

- 1 thought salary costs were high.
- 1 suggests work to improve the overall appearance of Coalville should be added to the Capital programme